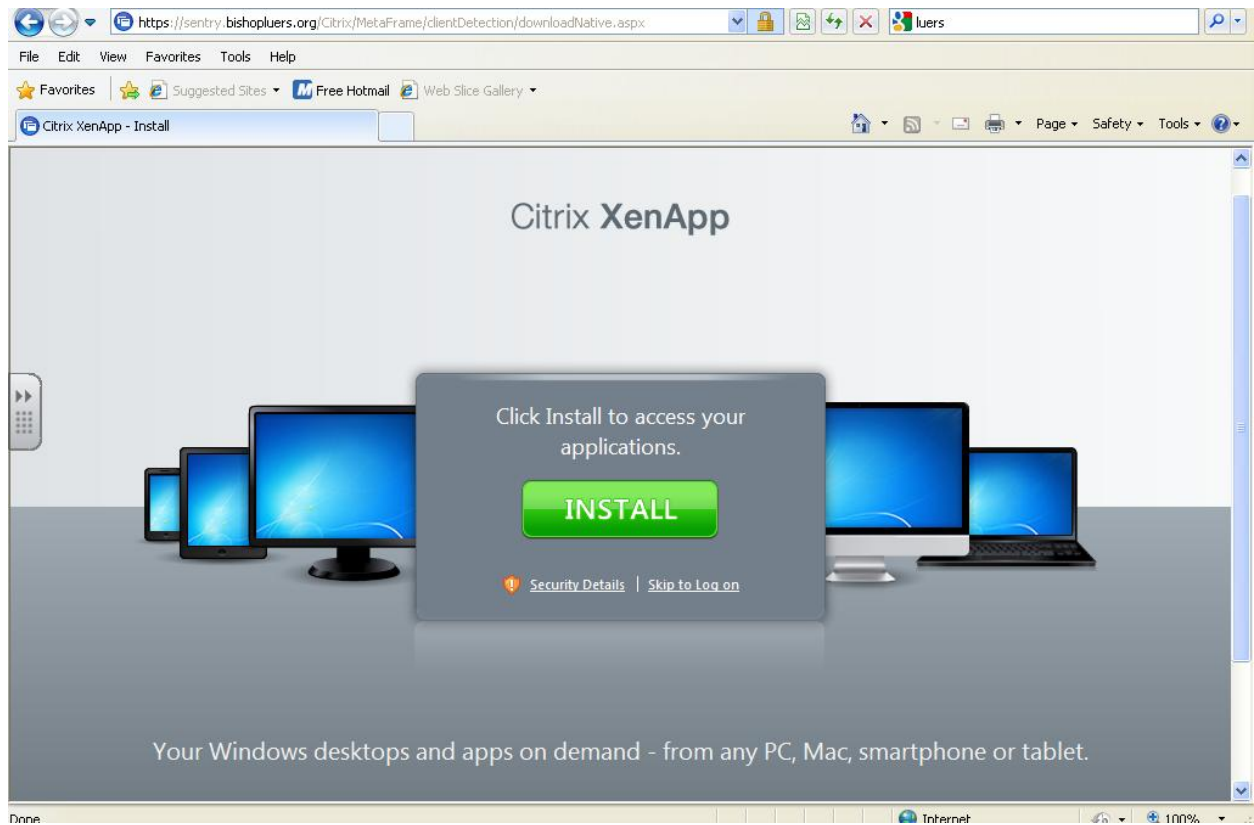
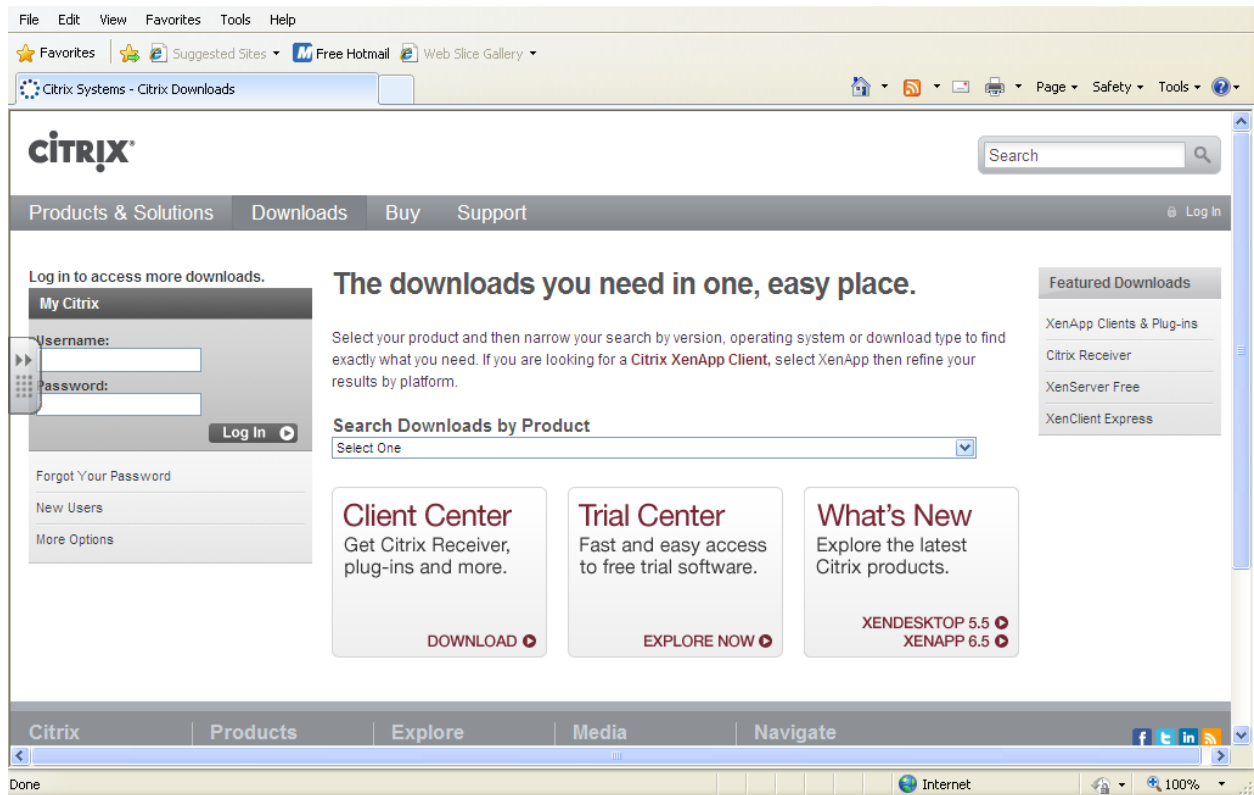


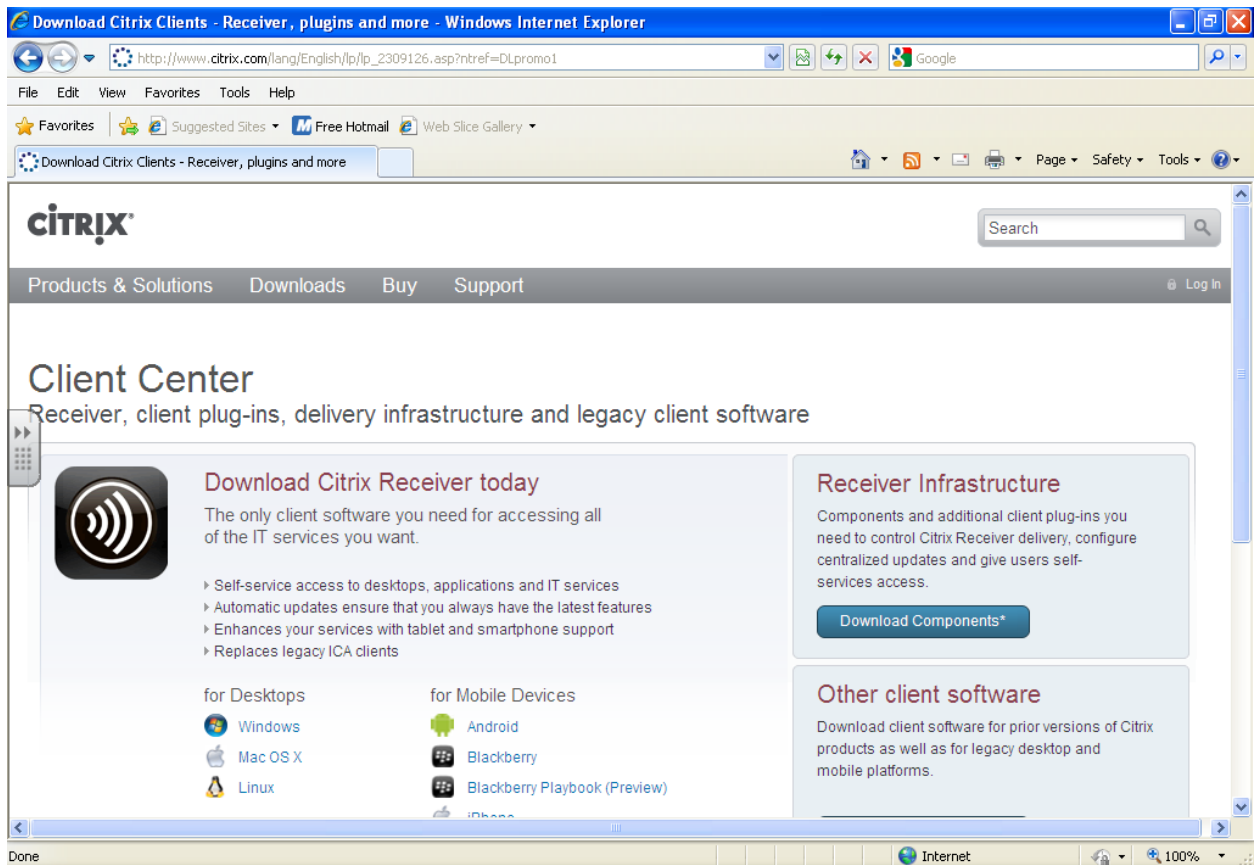
WHEN YOU CLICK ON *NETWORK LOGIN* LINK, YOU SHOULD SEE THIS:



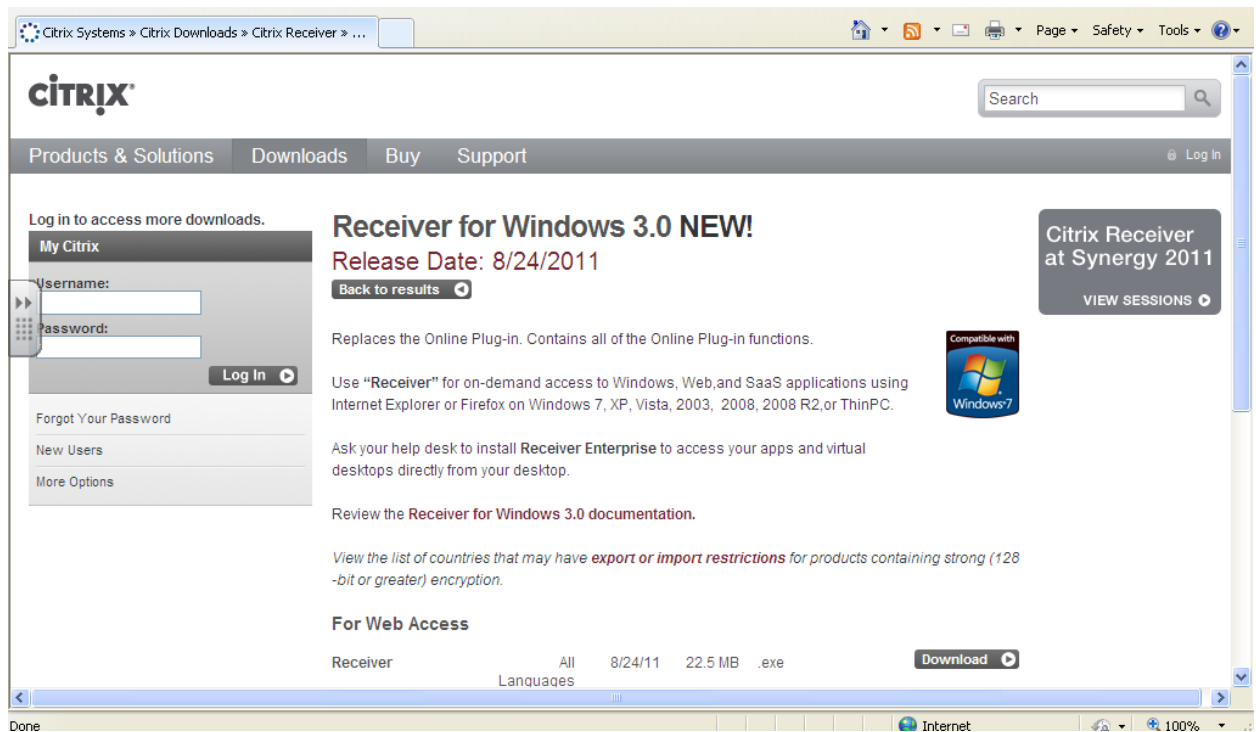
CLICK ON *INSTALL*.



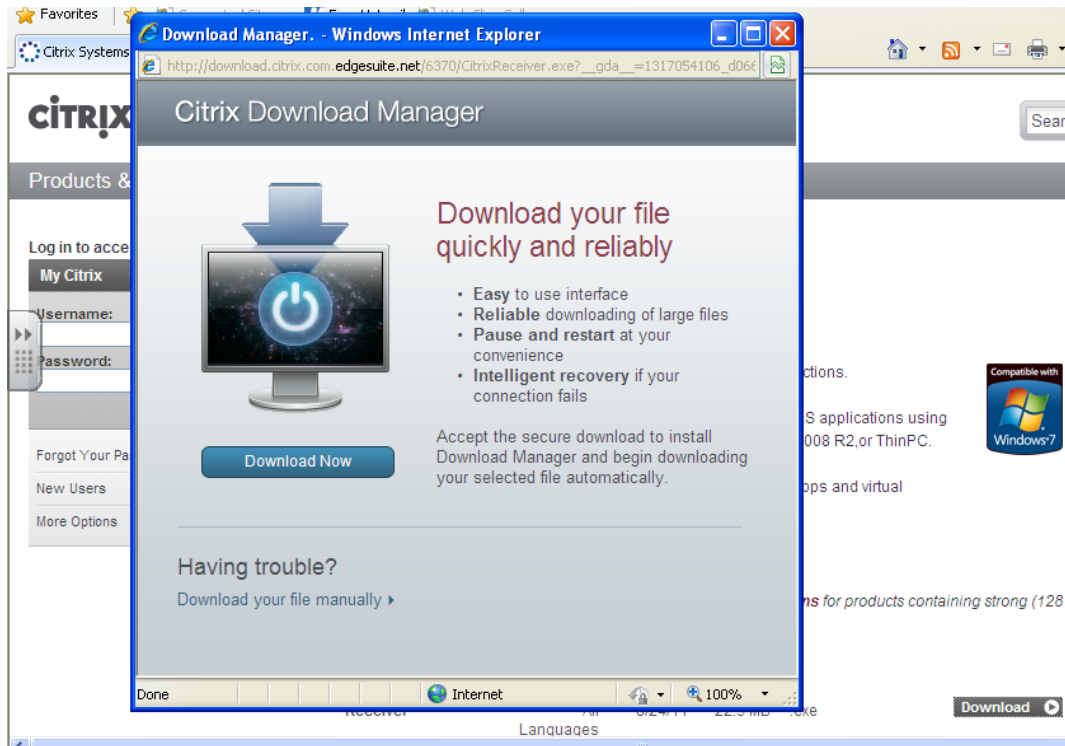
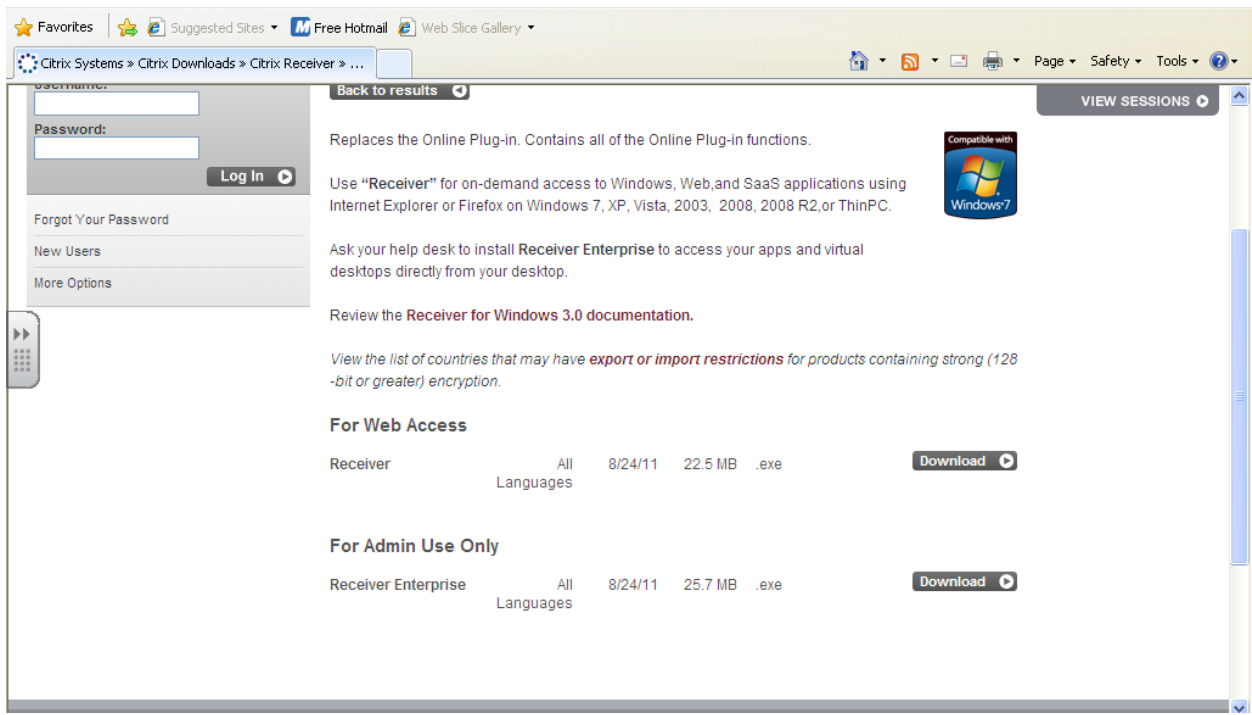
CLICK ON *CLIENT CENTER*.



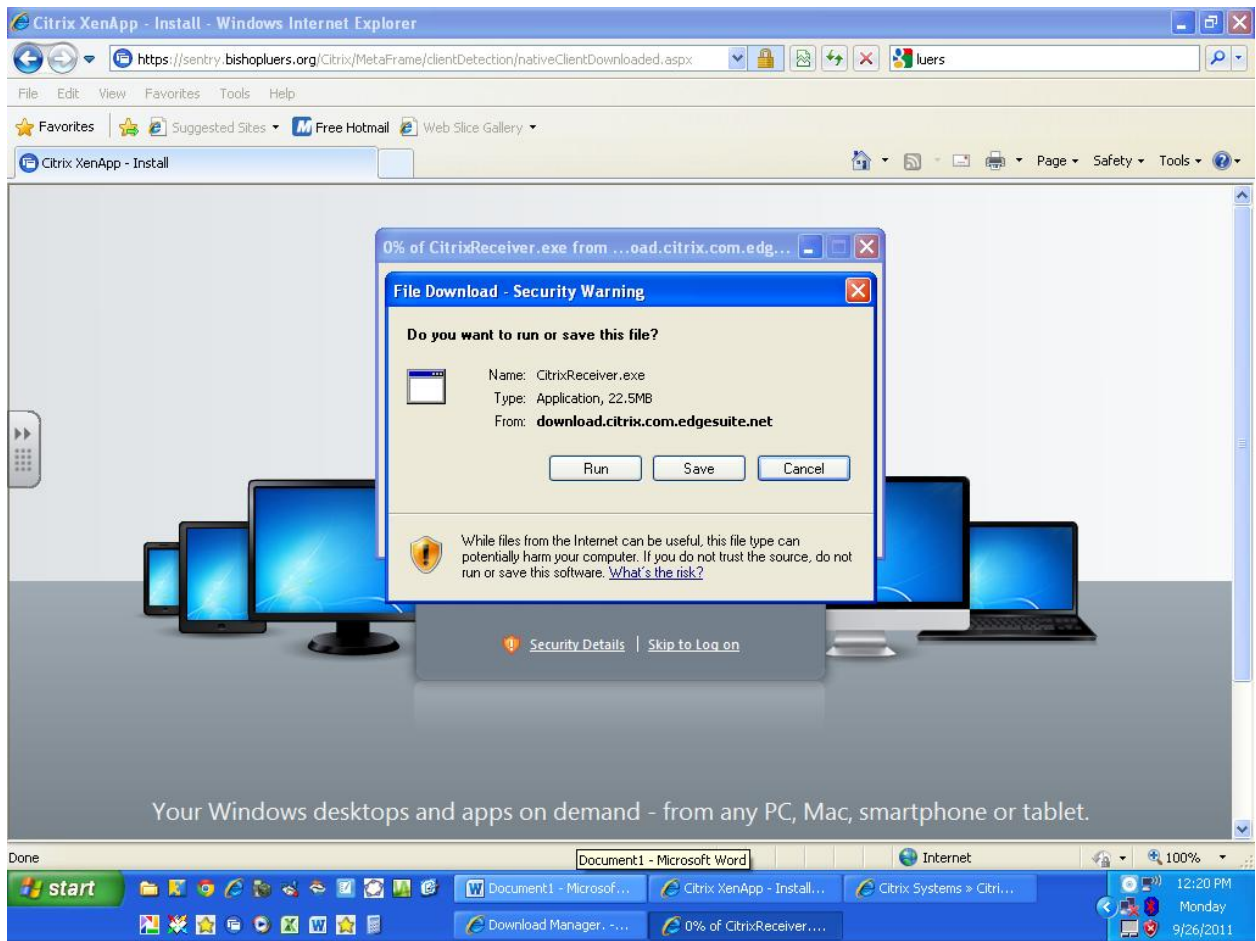
CHOOSE YOUR OPERATING SYSTEM.



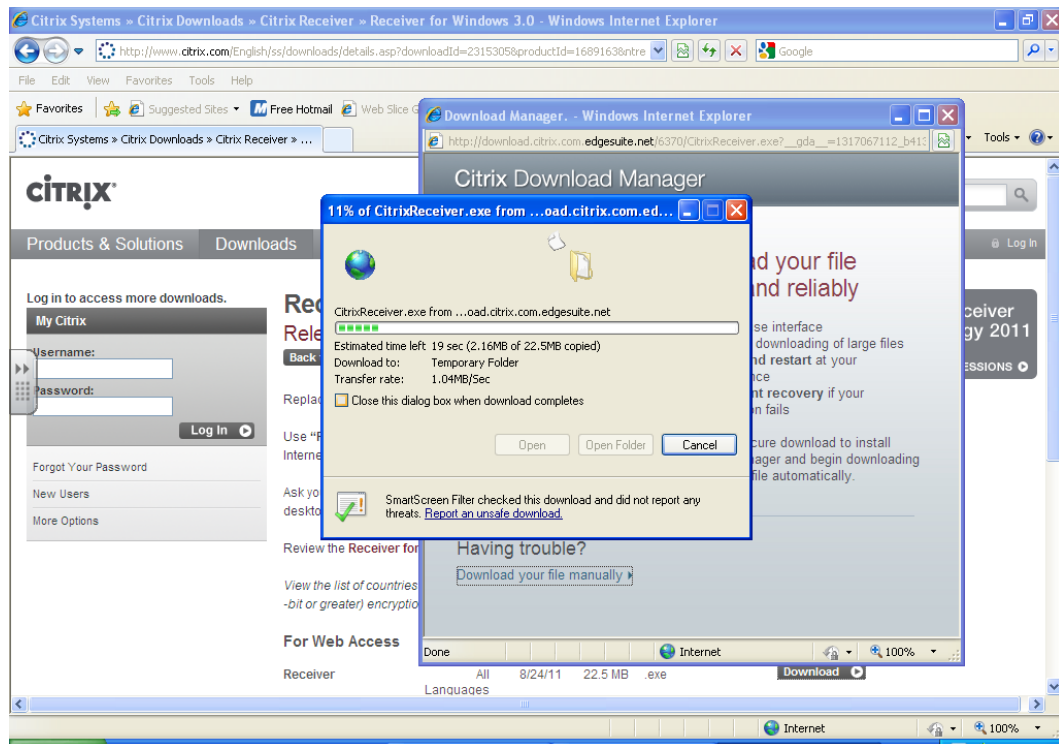
CLICK ON THE DOWNLOAD BUTTON BESIDE **For Web Access RECEIVER.**



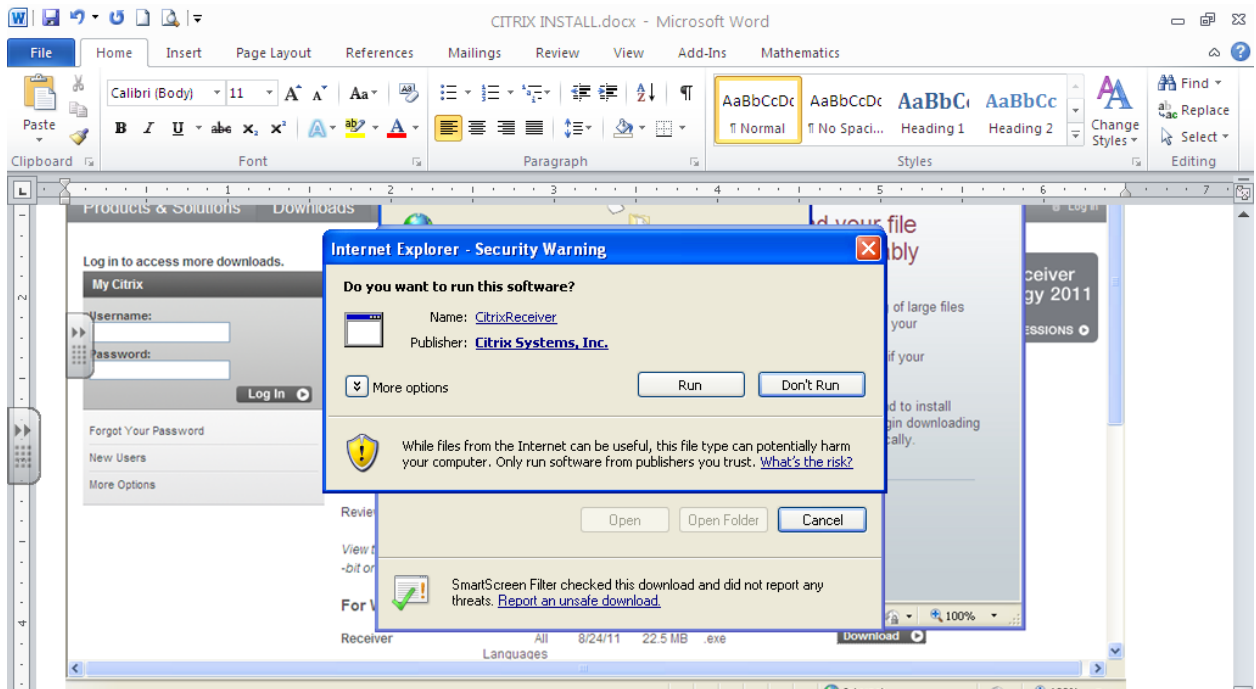
WHEN THIS WINDOW COMES UP, CHOOSE **DOWNLOAD YOUR FILE MANUALLY.**



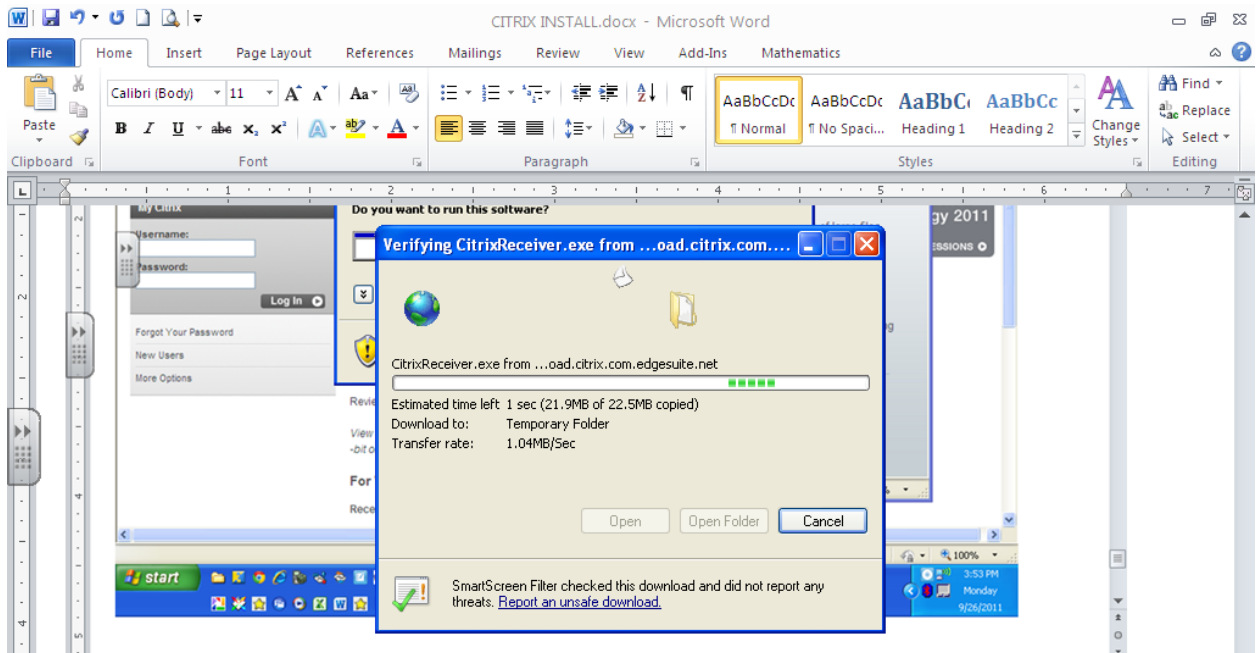
WHEN THIS WINDOW COMES UP, CHOOSE ***RUN***.



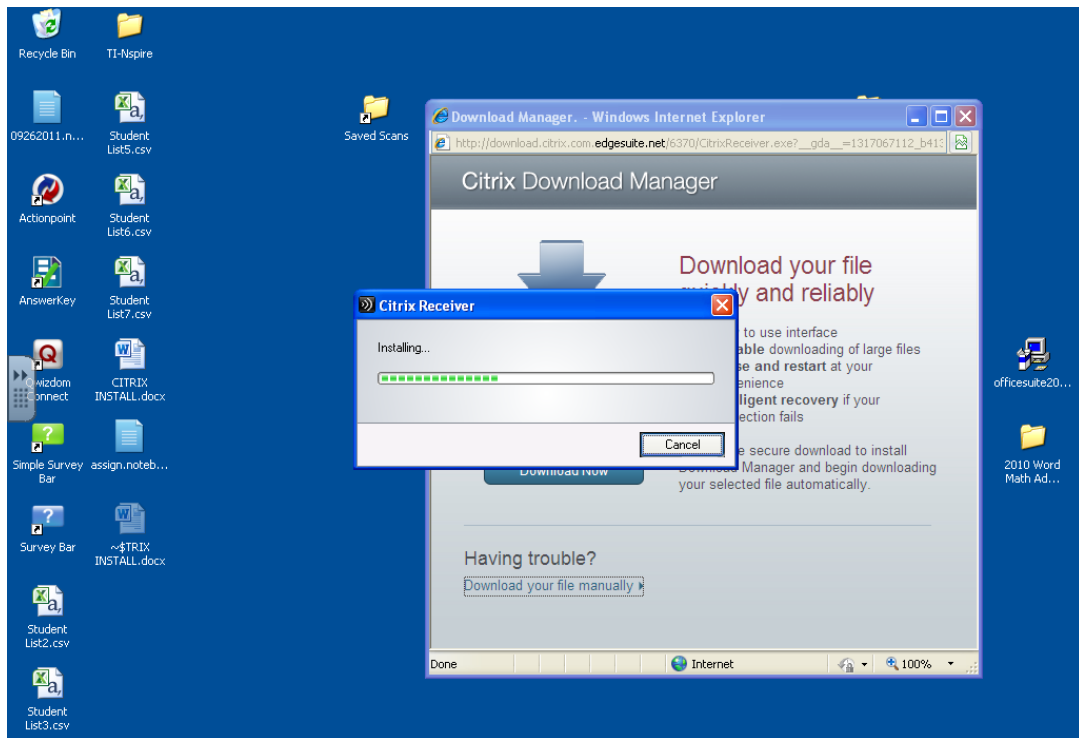
YOU WILL SEE A PROGRESS BAR.



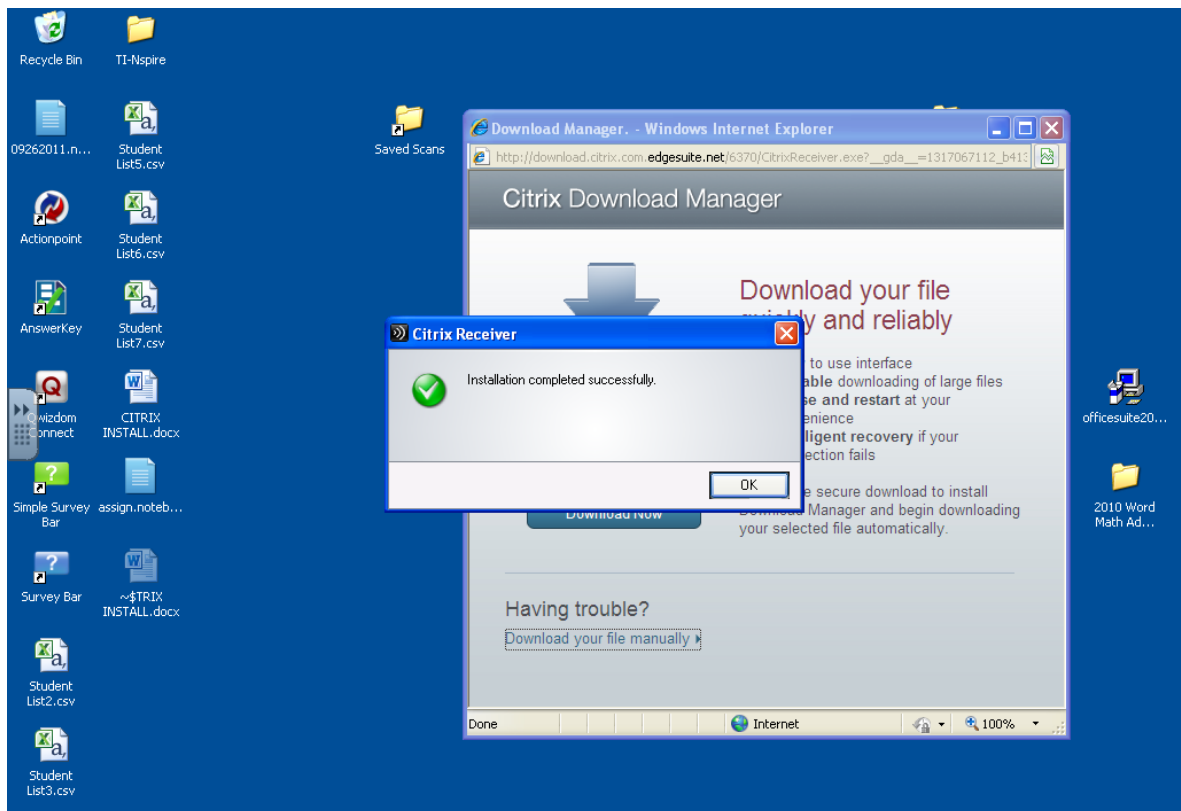
WHEN THIS WINDOW COMES UP, CHOOSE ***RUN*** again.



YOU WILL SEE ANOTHER PROGRESS BAR.

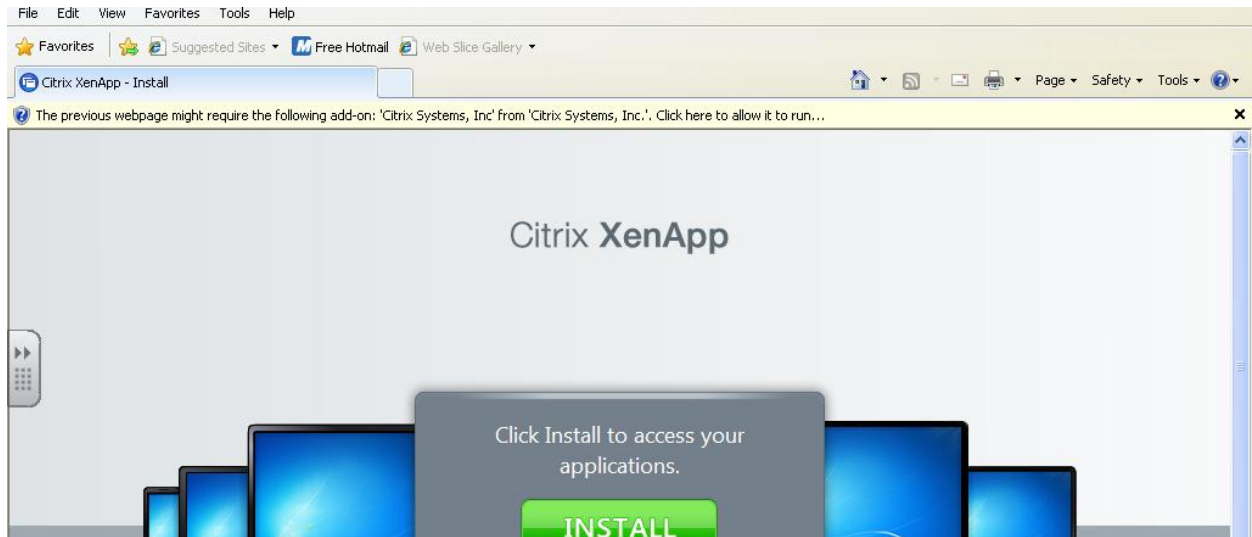


YOU WILL SEE ANOTHER PROGRESS BAR.

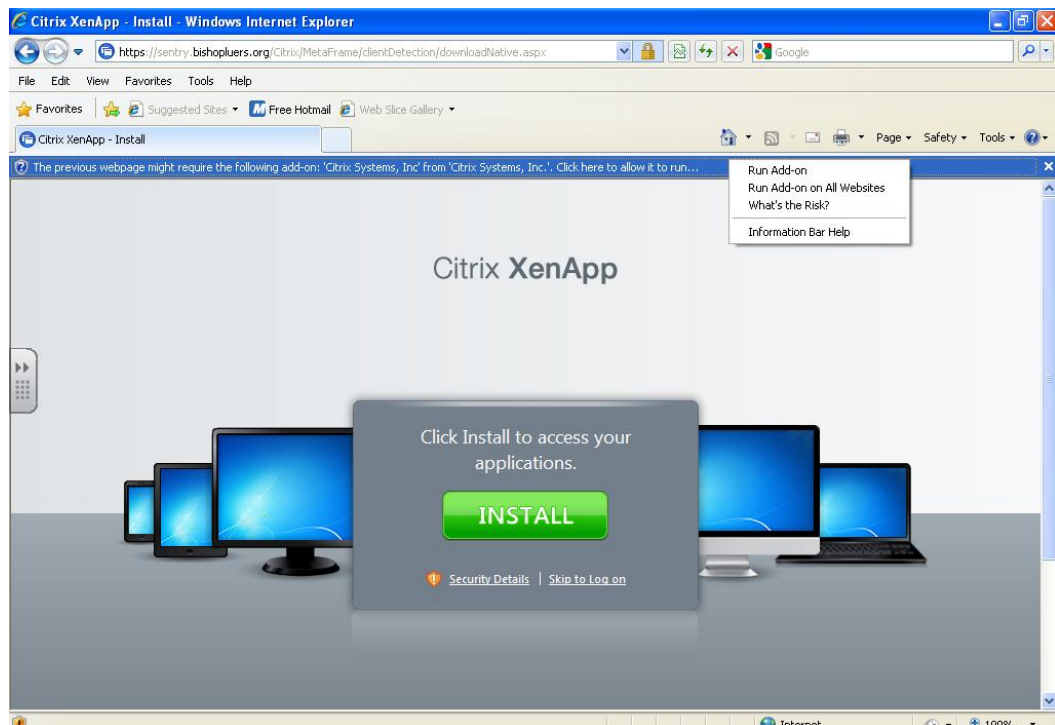


AND THEN IT WILL SAY IT IS DONE!

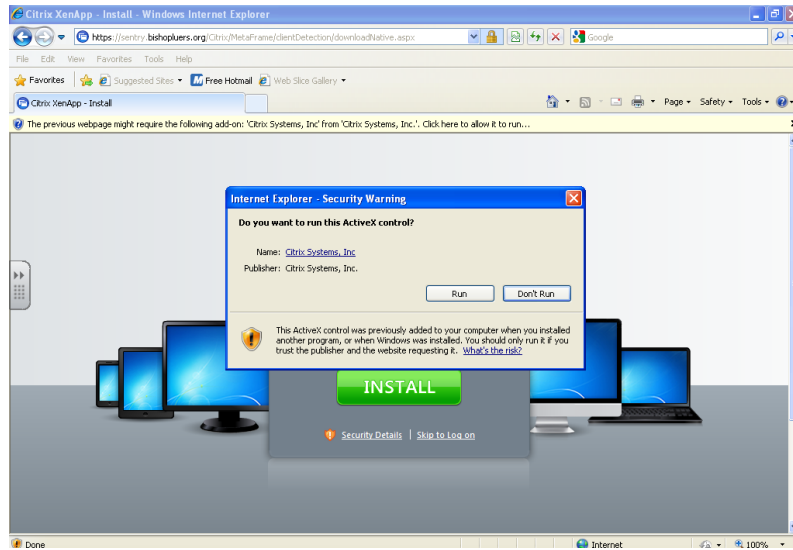
RESTART INTERNET EXPLORER, NAVIGATE BACK TO THE LUERS
NETWORK LOGIN PAGE.



THE FIRST TIME, YOU WILL SEE A YELLOW SECURITY BAR POP UP.



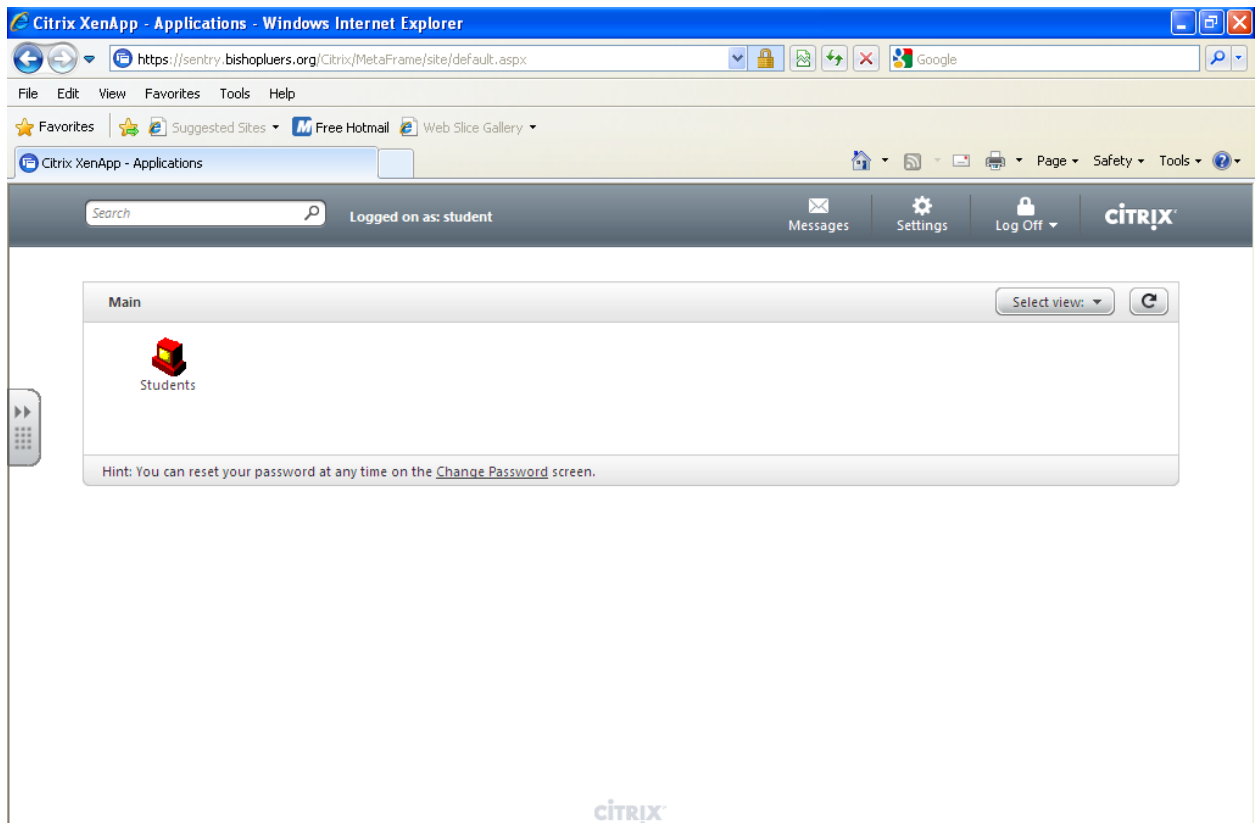
CLICK ON IT AND SELECT ***RUN ADD-ON ON ALL WEBSITES.***



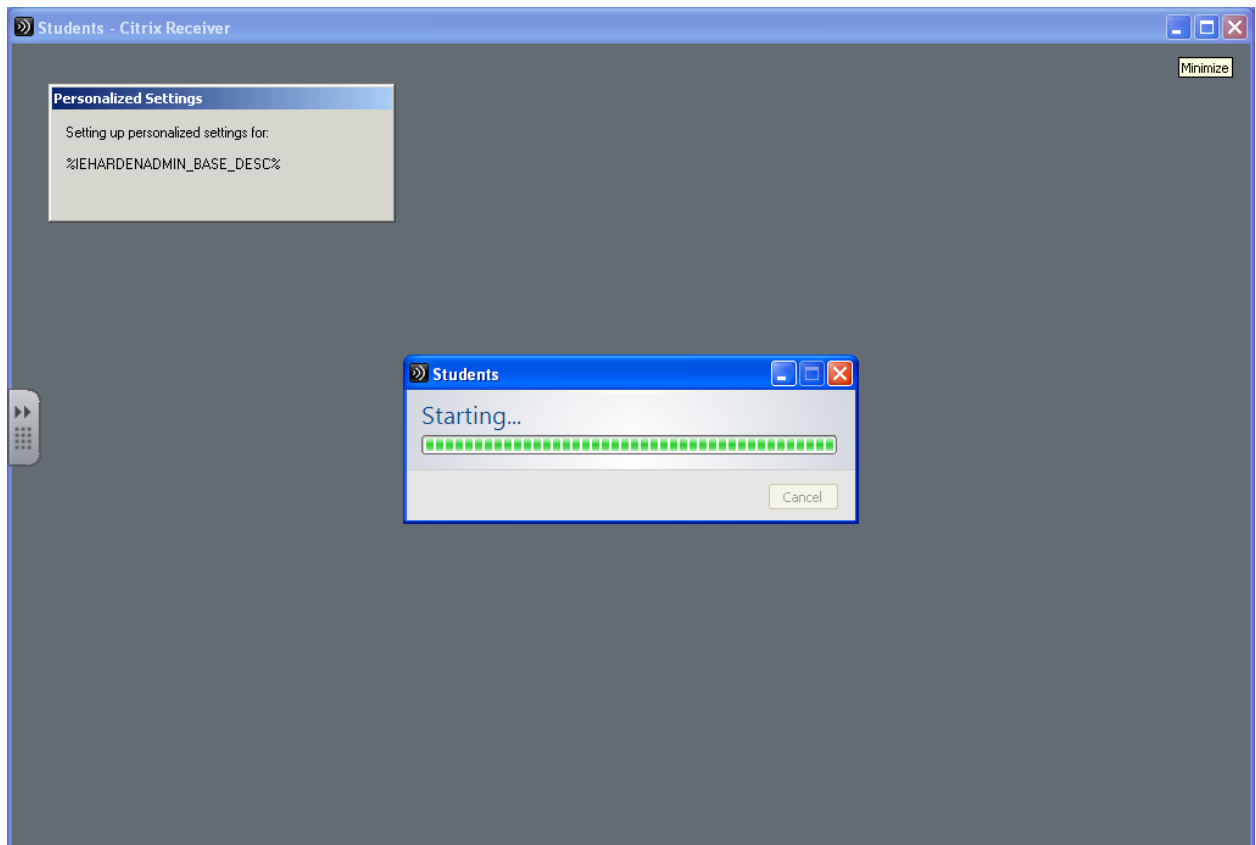
ON THE WINDOW THAT POPS UP, CHOOSE ***RUN***.

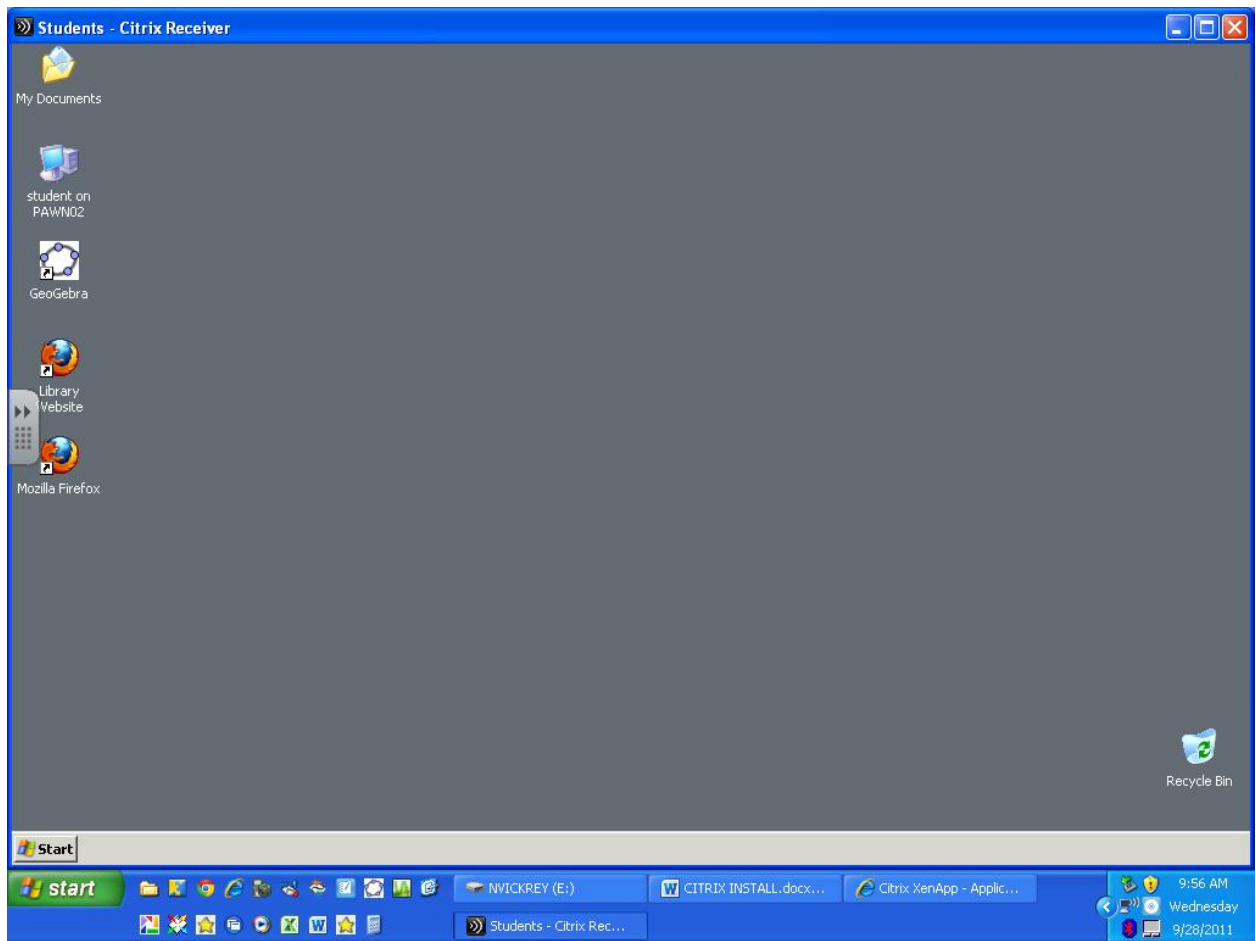


YOU SHOULD NOW BE ABLE TO LOGIN WITH THE SAME CREDENTIALS YOU USE AT SCHOOL.



YOU WILL SEE THE DESKTOPS AVAILABLE TO YOU. CLICK ON ***STUDENTS*** OR ***TEACHERS***.





THIS SHOULD BRING UP THE SAME DESKTOP YOU SEE AT SCHOOL.
TO QUIT, LOG OUT OR CLOSE WINDOW.